

Overview

The FieldServer BACnet Router offers a complete BACnet Internetworking solution for BACnet/IP, BACnet Ethernet, and BACnet MS/TP networks.

This is the first standalone BACnet Router that has been certified by BTL to ensure the highest standard for BACnet integration.

The FieldServer BACnet Router has two RS-485 ports enabling up to 64 BACnet MS/TP devices to be connected to it without the use of additional line drivers. Relative to a single port router, the dual port router halves device response time by distributing devices over the two RS-485 ports.

The FieldServer BACnet Router has an easy one-page configuration, greatly simplifying the installation process. Included in the BACnet Router the BACnet Explorer, allows the integrator to push a button and discover all the BACnet devices connected to the router, greatly simplifying the commissioning process and troubleshooting the BACnet network.



BACnet Router Features and Benefits

Multiple BACnet Routing Connections

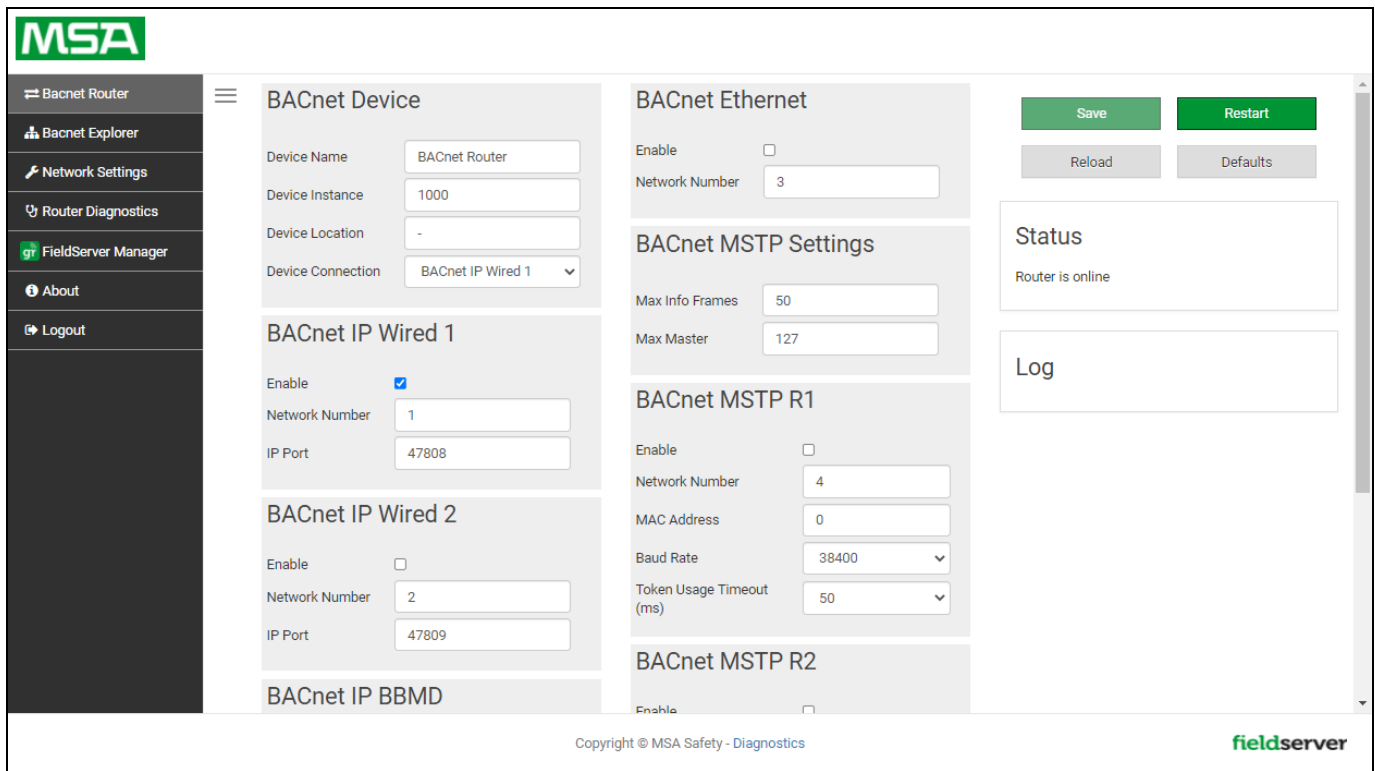
- BACnet/IP & BACnet MS/TP
- BACnet MS/TP & BACnet Ethernet
- BACnet MS/TP & BACnet MS/TP
- BACnet/IP & BACnet/IP
- BACnet/IP & BACnet Ethernet

Ease of Use

- BACnet Explorer: discovers devices connected to the FieldServer BACnet Router.
- BACnet Broadcast Management Device (BBMD) for a connection between different subnets, up to 50 devices supported on the Broadcast Distribution Table (BDT).
- Web Based configuration with no additional software needed for configuration.
- NAT support with secondary BACnet/IP connection for routing between public and private IP networks.
- Foreign Device Registration (FDR), exposing up to 147 devices details on different subnets.
- **MSA Grid - FieldServer Manager** registration connects your devices to the cloud, allowing secure remote access for diagnostics, monitoring, alarming and configuration.
- On-board diagnostics allow easy troubleshooting for both serial and Ethernet communications.
- **FieldSafe** adds a wealth of security options, including: web configuration page authentication (self-signed certificates), robust user and password management features.

Ease of Installation

- MDIX to use any Ethernet cable for commissioning and installation.
- DHCP to automatically obtain the IP setting from the network.
- Software “ToolBox” to find and diagnose all FieldServer BACnet routers on the network.
- Wide range of input power requirements, AC or DC.



Hardware Specifications

Communication

Serial (Galvanic Isolation): 2 x RS-485
Baud: 9600, 19200, 38400, 57600, 76800, 115200
Ethernet: 10/100BaseT, MDIX, DHCP

Environment

Operating Temperature: -20 to 70°C (-4 to 158°F)
Relative Humidity: 10-95% RH non-condensing

Construction

Dimensions: (HxWxD) 4 x 1.1 x 2.7 in (10.16 x 2.8 x 6.8cm)
Weight: 0.4 lbs (0.2 Kg)

Other

Web Configuration
 On-board diagnostics
 DIN rail mount included

Power Requirements *

Input: 24VAC 0.125A, 12-24VDC 0.25A
Max Power: 3W @12 VDC
 * Supports both Full-Wave and Half-Wave AC

Approvals

CE and FCC Part 15/ BTL Marked
 UL 60950-1 and CAN/CSA C22.2
 UKCA compliant
 RoHS3 and WEEE compliant



Ordering Information

The FieldServer BACnet Router is available in the following hardware configurations:

- FS–Router–BAC2 (2 Serial Ports)

Options

The Accessory Kit consists of a power supply, Ethernet cable, screwdriver and a USB flash drive that includes all manuals, data sheets, notes and the discovery tool.

- FS-8915-38-QS Accessory Kit, 110/220V

Contact MSA sales for an easy proof of concept evaluation: SMC-insidesales@msasafety.com.

MSA Safety

1000 Cranberry Woods Drive, Cranberry Township, PA 16066 USA
O. +1 408 964-4443 **TF.** +1 800 727-4377 **E.** SMC-insidesales@msasafety.com
www.MSAsafety.com